





We are Antera

We are a lift brand that takes creative design, intense innovation and uninhibited luxury and turns them into incredible home experiences.

Our secret as the star brand of the Cibes Lift Group is our exceptional customer experiences. In doing so, creating loyalty throughout a world of Antera owners.

We move the entire lift industry forward, away from stodgy and basic elevator design stuck in the 1990s and toward modern and sleek designs made for the home. We empower our people, our customers and our partners to think big, and to always strive for excellence and quality at every step of the way.

Our place is at the top, the logical goal for any lift company.

We strive to rise above.





Swedish Design

Safety first

European safety standards

We believe safety is paramount, and that is why every single one of our lifts is carefully designed to respect the strictest of European standards – and most importantly the EN 81-41 machine directive. All of our lifts, regardless of design or model, offer the same level of unparalleled safety.

We never compromise on safety.



24 / 7 Service nationwide

We believe in the value of local. Beyond our 24/7 hotline, we keep an ample local supply of spare parts and have technicians on call around the country in case of emergencies.

In fact, we are so determined to be there for you in case of emergencies that **we check if your elevator phone is active every day** through a discrete ping, and alert you if it is not.

Anti-Trap system for emergencies

As a home lift company, safety is our main concern.

This is why our lifts come equipped with an anti-trap system consisting of a battery-powered emergency lowering system in case of blackouts, a reset button, emergency manual openings and for our generation 4 lifts, a manual lowering directly from the pit!

We have you covered!



Safety focused in-depth maintenances

Our maintenances are thorough and complex. Rather than a simple check, we make sure that every single safety function, including sensors, emergency stops, brakes and more is 100% operational.

More than simply extending the lifetime of your lift, our maintenances are a key part of our safety promise.



Generation 5 screw-drive

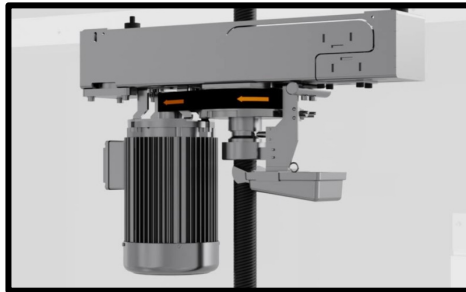
Cutting edge technology

Vibration proof extra silent



Thanks to the new XL Rubber Rollers, enjoy a silky smooth ride with no oil and sound levels as low as 40 dB

Asynchronous Motor



The asynchronous motor is the top of the range when it comes to Cibes Lift Group. So silent that you will wonder if it is even there...

1st class safety safer than ever



Between our cutting-edge light curtain, our 2N connected Lift or our anti-trap system, the Kalea Gen 4 is the safest lift we have ever built.

The strictest of standards



Our lifts come TUV Sud-certified, ISO 9001 certified and certified by the LiftInstituut, Europe's leading agency specialized solely in lift certification







Z70



Z85



Z90

Our models

From the Z70 for installation inside a shaft to the Z90 with full panoramic glass, every model is packed with our luxurious features from a real wood finish to Bose speakers in-built in the lift. We redefine the realm of customization with a dizzying array of customization choices, from powdercoats to wood finishes, and unlimited options on your screen.





Touchscreen perfection

Discover the Antera touchscreen, complete with customizable backgrounds, light control, locking system, Smart Lift monitoring and ventilation. You imagine it and this lift has it.

- Video back screen display - can be changed to custom user choices
- Ambient music linked to Bose sound system - can be changed to custom user choices
- Light control from touchscreen
- Fan control directly from touchscreen
- Child lock / passcode as standard
- Statistics, language, settings easily accessible through touchscreen
- Customizable floor names
- Open / Close Door functionalities



Wood grain

The true sumptuous feeling of wood grain under your hand with every ride. Tenebre and Aube, like two faces of the same coin, offer true luxury within the home.



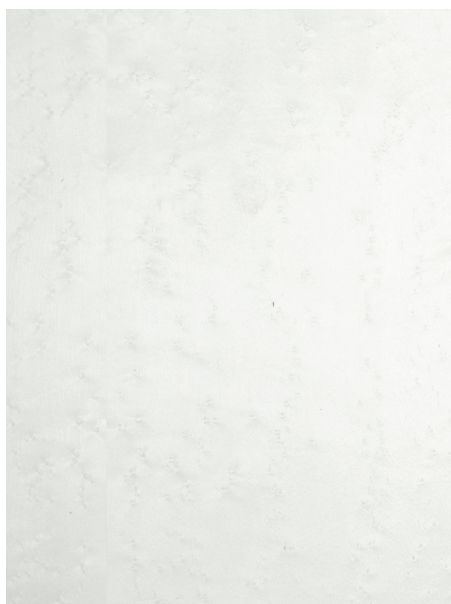
Tenebre



Aube

Wood veneer

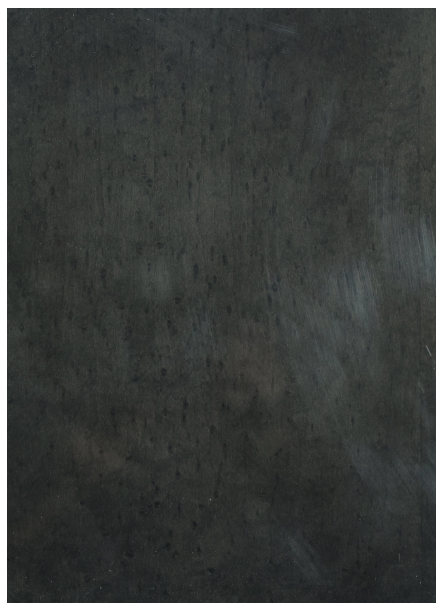
At the intersection of marble and wood, these wonderful wood veneers can match any unique home interior style and add gravitas and decorum in unfathomable ways.



Ivoire



Creme



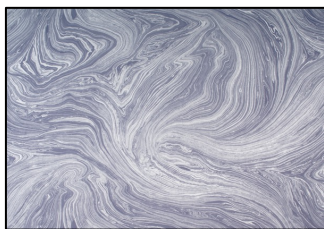
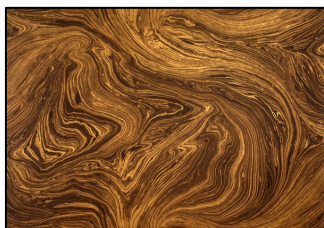
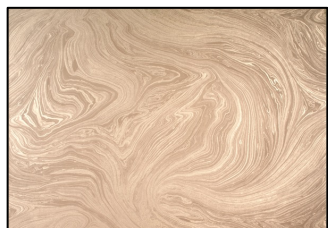
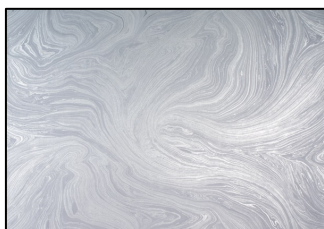
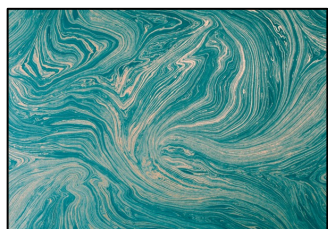
Ebene



Azure

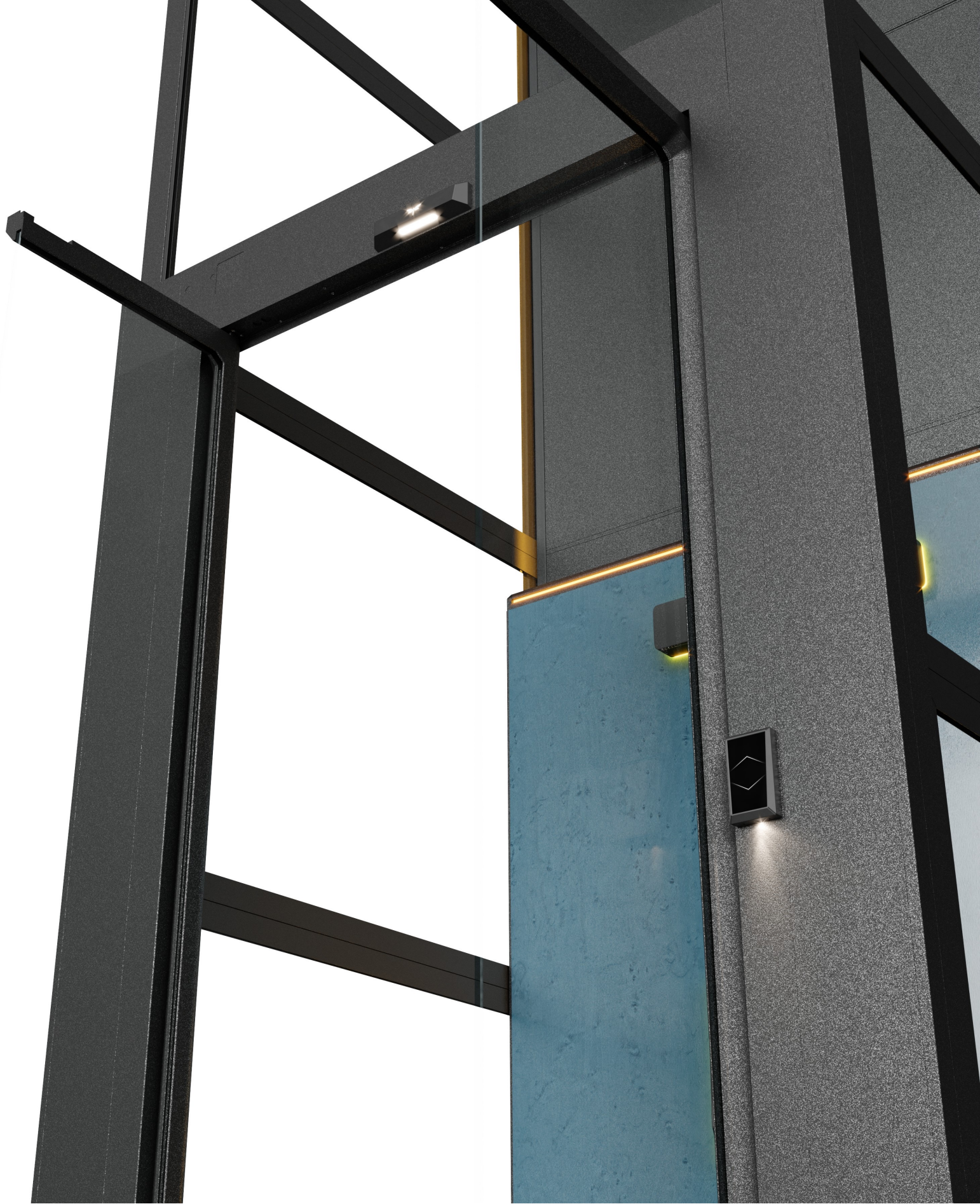


Cbataigne



Dazzling ceilings

Imported straight from the USA, these mesmerizing patterns bring the sky to new heights. Dazzle and hypnotize your guests as soon as they look to the heavens.



Saloon doors

The ultimate level of elegance - doors like no other for a lift like no other. Saloon doors announce your entrance in style, a court opening to your presence.

Infinity glass

Frameless glass shafts (available on Z90 only) to achieve the illusion of uninterrupted glass. Open up your space to a luxurious new presence.





A champagne



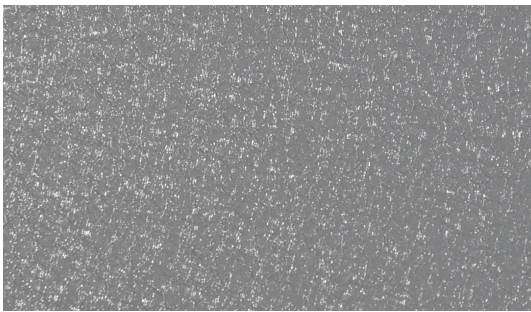
Cedar brown



Golden sunshine



Lava



Pearl river



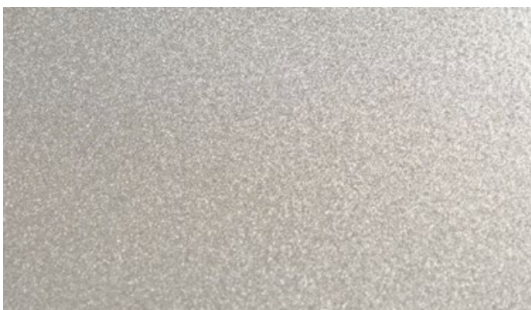
Roman rosé



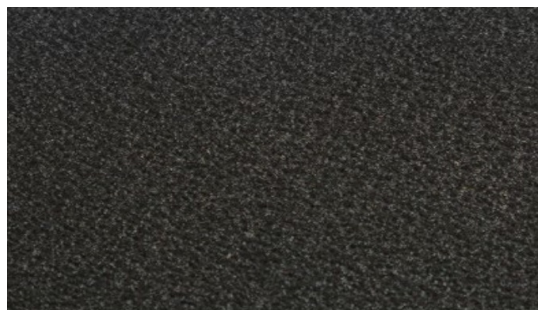
Sand dune



Midnight black



Silver sky



Jet black

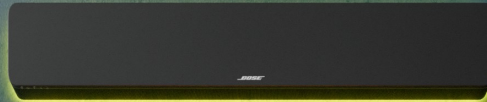
Premium powdercoats

*standard



High-back in standard shaft

*on Z85 model





The image shows the interior of a modern elevator cabin. The walls are covered in a vertical wood-grain pattern. A large, rectangular digital display is mounted on the wall, showing a blue background with the number '2' and a keypad with buttons labeled 'B1', '1', '2', '3', '4', '5', and directional arrows. Above the display is a long, horizontal, illuminated light fixture. The ceiling is a large, square panel with a wavy, marbled pattern in shades of green and blue. The floor is a dark, solid color. The overall atmosphere is sleek and contemporary.

Full cabin
in panoramic shaft

*on Z90 model

BOSE[®]

In-built speaker





DISCOVER OUR SUPPLIERS

PREMIUM QUALITY

CEILING FINISHES

	<p>WHO IS LEN-TEX?</p> <p>Founded in the USA in 1983, Len-Tex is one of the world leaders in high-quality vinyl wallcoverings, known for their innovative and textured designs</p> <p>WHERE IS LEN-TEX MADE?</p>  <p>USA</p>	<p>WHY DID WE CHOOSE THEM?</p> <p>Len-Tex's uncompromising focus on interior air quality. They follow the stringent standards of US medical products and developed a Clean Vinyl Technology™</p>     
--	---	--

FLOORING FINISHES

	<p>WHO IS CORKSRIBAS?</p> <p>Founded in Portugal in 1980, CorksRibas specializes in extremely high-quality all-natural cork flooring for use in luxury shops and hotels, yachts, and homes.</p> <p>WHERE IS CORKSRIBAS MADE?</p>  <p>PORTUGAL</p>	<p>WHY DID WE CHOOSE THEM?</p> <p>Cork is the perfect flooring for the home, with a built-in softness, natural sound insulation and all-natural feel. Within the industry, CorksRibas is the leader in the high-quality segment thanks to its three core lines:</p> <p>EZCork NaturCork Green Flow Collection</p>
---	--	---

POWDERCOAT

	<p>WHO IS TIGER DRYLACK?</p> <p>Founded in Austria in 1930 by the brothers Theodor and Gustav Berghofer</p>  <p>WHERE IS TIGER MADE?</p>     <p>AUSTRIA CAN USA CN</p>	<p>WHY DID WE CHOOSE THEM?</p> <p>World leader in high-end powdercoats, with a strong focus on energy and the environment to ensure the safest materials for in-home use paint</p>   
--	--	---

BOXWOOD CARBONIZATION

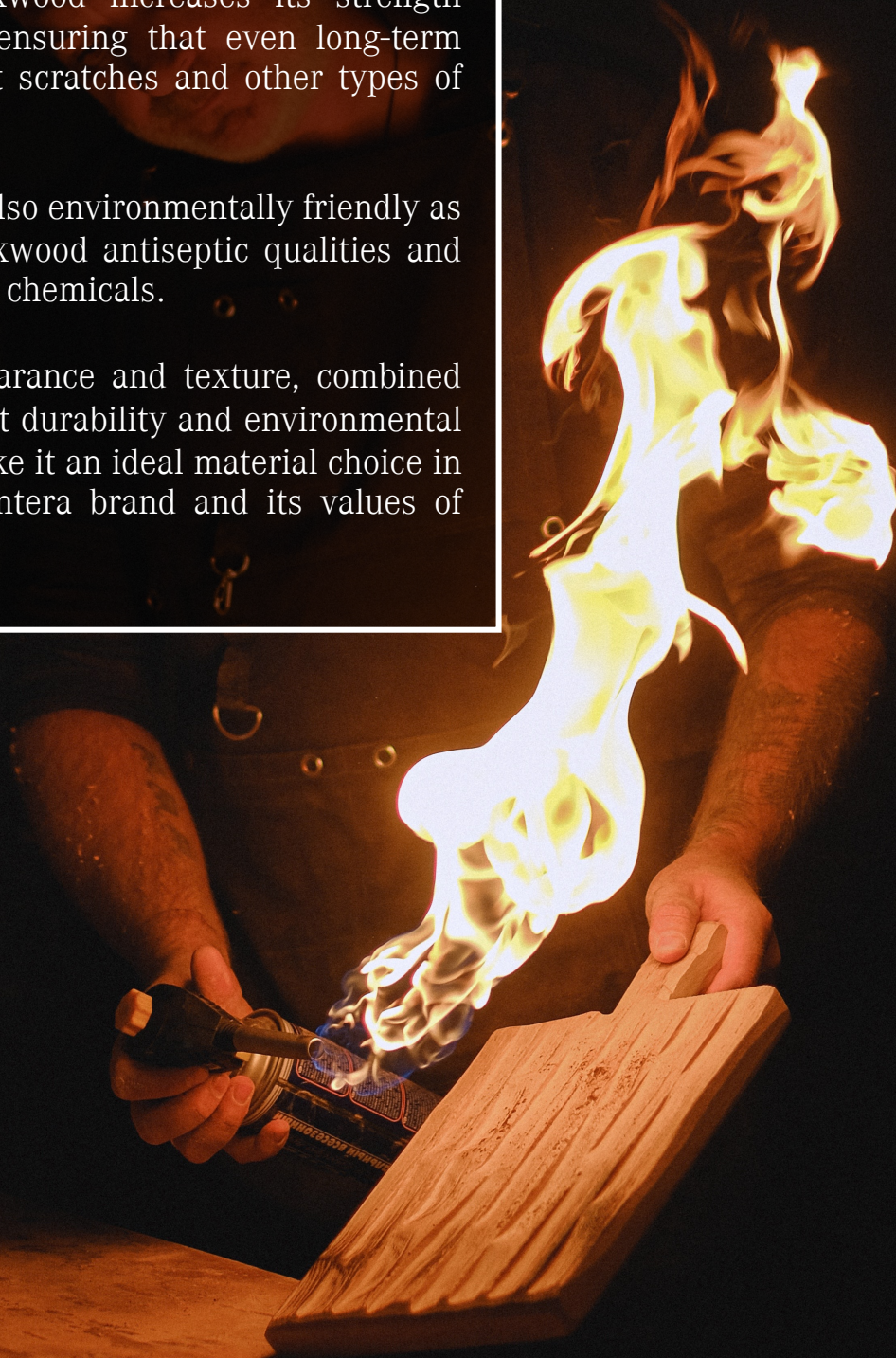
The Antera Carbonized Boxwood Design Wall is achieved by heat treating the boxwood immediately after carving.

This not only creates an extremely high-end feel, it also comes with a host of advantages.

Carbonizing boxwood increases its strength and durability, ensuring that even long-term usage will resist scratches and other types of wear.

This process is also environmentally friendly as it grants the boxwood antiseptic qualities and does not use any chemicals.

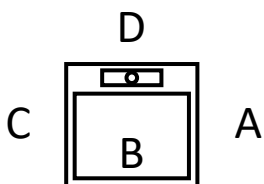
Its unique appearance and texture, combined with its excellent durability and environmental friendliness, make it an ideal material choice in line with the Antera brand and its values of intimate luxury.



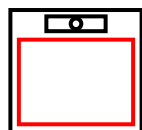
ANTERA SIZES

	CABIN SIZE Z90 / Z70 (in mm)		HIGHBACK SIZE Z85 (in mm)		SHAFT SIZE (in mm)		CUT OUT SIZE (in mm) (add +30mm if door on that side)			
	A/C Side	B/D Side	A/C Side	B/D Side	A/C Side	B/D Side	Z90 / Z70 CUT OUT SIZE		Z85 CUT OUT SIZE	
							A/C Side	B/D Side	A/C Side	B/D Side
1	710	815	635	850	1000	900	1040	940	1060	960
2	810	815	735	850	1100	900	1140	940	1160	960
3	910	815	835	850	1200	900	1240	940	1260	960
4	1010	815	935	850	1300	900	1340	940	1360	960
5	1110	815	1035	850	1400	900	1440	940	1460	960
6	1210	815	1135	850	1500	900	1540	940	1560	960
7	710	915	635	950	1000	1000	1040	1040	1060	1060
8	810	915	735	950	1100	1000	1140	1040	1160	1060
9	910	915	835	950	1200	1000	1240	1040	1260	1060
10	1010	915	935	950	1300	1000	1340	1040	1360	1060
11	1110	915	1035	950	1400	1000	1440	1040	1460	1060
12	1210	915	1135	950	1500	1000	1540	1040	1560	1060
13	710	1015	635	1050	1000	1100	1040	1140	1060	1160
14	810	1015	735	1050	1100	1100	1140	1140	1160	1160
15	910	1015	835	1050	1200	1100	1240	1140	1260	1160
16	1010	1015	935	1050	1300	1100	1340	1140	1360	1160
17	1110	1015	1035	1050	1400	1100	1440	1140	1460	1160
18	1210	1015	1135	1050	1500	1100	1540	1140	1560	1160
19	710	1115	635	1150	1000	1200	1040	1240	1060	1260
20	810	1115	735	1150	1100	1200	1140	1240	1160	1260
21	910	1115	835	1150	1200	1200	1240	1240	1260	1260
22	1010	1115	935	1150	1300	1200	1340	1240	1360	1260
23	1110	1115	1035	1150	1400	1200	1440	1240	1460	1260
24	1210	1115	1135	1150	1500	1200	1540	1240	1560	1260
25	710	1215	635	1250	1000	1300	1040	1340	1060	1360
26	810	1215	735	1250	1100	1300	1140	1340	1160	1360
27	910	1215	835	1250	1200	1300	1240	1340	1260	1360
28	1010	1215	935	1250	1300	1300	1340	1340	1360	1360
29	1110	1215	1035	1250	1400	1300	1440	1340	1460	1360
30	1210	1215	1135	1250	1500	1300	1540	1340	1560	1360
31	710	1315	635	1350	1000	1400	1040	1440	1060	1460
32	810	1315	735	1350	1100	1400	1140	1440	1160	1460
33	910	1315	835	1350	1200	1400	1240	1440	1260	1460
34	1010	1315	935	1350	1300	1400	1340	1440	1360	1460
35	1110	1315	1035	1350	1400	1400	1440	1440	1460	1460
36	1210	1315	1135	1350	1500	1400	1540	1440	1560	1460
37	710	1415	635	1450	1000	1500	1040	1540	1060	1560
38	810	1415	735	1450	1100	1500	1140	1540	1160	1560
39	910	1415	835	1450	1200	1500	1240	1540	1260	1560
40	1010	1415	935	1450	1300	1500	1340	1540	1360	1560
41	1110	1415	1035	1450	1400	1500	1440	1540	1460	1560

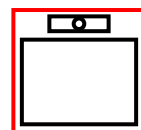
NUMBERS



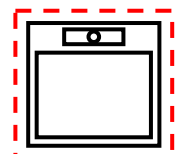
B & D are parallel to the screw and motor



CABIN SIZE is the standing space inside the lift



SHAFT SIZE is the final size of the installed shaft



CUT OUT SIZE is the space needed to install the lift

TECHNICAL SPECIFICATIONS

TECHNICAL DETAILS

	Cabin (Z70 / Z90)	Platform (Z85)
MAX # OF STOPS	6 Stops	
MAX TRAVEL HEIGHT	13,000 mm with 1-phase / 20,000 mm with 3-phase	
POWER SUPPLY	1 phase 220V / 3 phase 220 V / 3 phase 400 V	
MINIMUM HEIGHT TOP FLOOR	2500 mm	2250 mm
BOTTOM PIT	100 - 120 mm / 0 mm optional with ramp	50 - 70 mm / 0 mm optional with ramp
PRODUCT STANDARD	MD 2006/42/EC, EN81-41, certified by SIL3	
DRIVE MODE	Screw-Drive	
RATED POWER	3 kW	
MACHINE ROOM	None (integrated solution)	
DOOR OPENING	One Side Only	Flexible choice for 3 sides
SAFETY DEVICE	360° catchment protection with light curtain. Emergency Battery Lowering in case of power failure. Overload alarm device. 2N phone-equipped emergency communication device. Electronic and mechanical safety door protection system. Can be connected to fire alarm device.	360° catchment protection with mechanical safety edge. Emergency Battery Lowering in case of power failure. Overload alarm device. 2N phone-equipped emergency communication device. Electronic and mechanical safety door protection system. Can be connected to fire alarm device.
SHAFT OPTION	Shaftless (X30) / Panoramic (X80)	Panoramic (X50)
LOCATION	Indoor or Outdoor	
SPEED	0.15 m/s / 0.25 m/s (with 3 phase)	0.15 m/s
GLASS	Tempered & Laminated	



WHAT ABOUT SPEED?

0.15_{m/s}

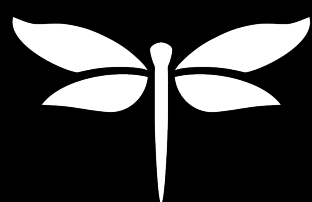
Our standard and recommended speed for optimal operation.

0.15 m/s is the speed that is recommended by the EU En81-41 machine directive for our range of platform lifts, which we also extend to the Z70 / Z90 products.

0.25_{m/s}

Thanks to our cabin design and light curtain safety edges, we are able to offer a faster speed of 0.25 exclusively on the Z70 / Z90 line without compromising safety in any way.

Enjoy a faster ride in full safety!



ANTERA
LIFTS